



Loftus COMMUNITY CENTRE 2015

ANNUAL REPORT



99 Loftus Street, Leederville, WA 6007
info@loftuscommunitycentre.org.au www.loftuscommunitycentre.org.au
 t: (08) 9328 3098 f: (08) 9227 7780



“I’m proud to report that the Loftus Community Centre achieved a budget surplus for 2014-2015 in what had a been budgeted as a deficit.”



Contents

| | | | |
|-------------------------|-------|--------------------|----|
| President’s Report | 1 | Childcare Co-op | 11 |
| Centre Manager’s Report | 2 - 3 | Toy Library | 12 |
| Our Centre | 4 - 5 | Loftus Playgroup | 12 |
| Strategic Plan | 6 - 7 | Treasurer’s Report | 12 |
| School Holiday Program | 8 - 9 | Profit & Loss | 13 |
| 3+ Kindy | 10 | Balance Sheet | 13 |
| Platinum Club | 11 | | |



I would like to thank Jodi Lendrum, Jenny Rustean, Evie Deas, Lucy Timmings, Sarah Henderson, Dana Gaylard, all the casual staff, volunteers and members for their hard work and dedication making this result possible. At the beginning of the financial year the LCC Management Team made the difficult decision on having a budget deficit on a very lean budget as highlighted in the Centre Manager’s report.

The centre introduced a number of new initiatives such as the popular Lego Club, the Chess Club, re-vamped School Holiday program and Yoga Fresh. In addition, the team have been working hard with the vast number of user groups to achieve to achieve the best possible outcomes for both the centre and the user groups.

The 3+ Kindy is still popular in the community and the team have been working tirelessly to develop a program within the Early Years Learning Framework. The 3+Kindy’s Policies and Procedures have been completed and updated to reflect the new Early Years Learning Framework. The Kindy was assessed by Department for Communities and Local Government.

I’m very proud to announce that the Kindy received a great result with ‘Exceeding’ National Quality Standards for the areas of Relationships with Children and Collaborative Partnerships with Families and Community. In addition, they received ‘Fully Met’ for the areas of Educational Program and Practice, Children’s Health and Safety, Physical Environment, Staffing Arrangements and Leadership and Service Management.

The Loftus Playgroup has been continuing at the centre. Having originally joined as a member of Playgroup at the centre, there has always been slight duplication of some the operational processes with Playgroup and the centre and membership enquiries were often a two-step process. Over the last financial year the LCC and the Loftus Playgroup Inc have been working together to dissolve the Loftus Playgroup Inc to enable the LCC to operate playgroup. This will ultimately streamline the playgroup enquiries, maximise room

usage and offer the potential to diversify the playgroup’s offerings by potentially offering some special interest playgroups.

The Playgroup will operate in a similar model under LCC management.

I would like to thank the City of Vincent for their ongoing financial support of the centre.

These are just a few highlights in the Centre from the last 12 months. The successful and ongoing operation of the LCC, of a community centre which receives 15% of its income from the City of Vincent, the only government and grant funding that the centre receives, is a true testament of the passionate, dedicated hard working of the LCC staff, volunteers, members, community groups and Management Committee. Thank you to everyone for their continued support.

Emily Chee
President - Loftus Community Centre



“Our vision “A dynamic hub that connects people in our community” has certainly run true over this last 12 months. The centre has again achieved amazing results in delivering an exceptional service to our community in a somewhat difficult environment. Together with our partners and user groups we have fostered community engagement and enhanced the quality of life by facilitating relevant activities and services.”



Jodi Lendrum Centre Manager

Much time has been dedicated to implementing a new Procedures and Policies manual for our 3+ kindy program in line with the requirements of the Early Years Learning Framework. Whilst this was a time consuming exercise the end product has streamlined our operations and provided us with a very clear direction in all 7 quality areas. In line with this we were recently assessed by the Department of Communities and Local Government.

I am delighted to report that the centre received a 'fully met' for the areas of Educational Program and Practice, Children's Health and Safety, Physical Environment, Staffing Arrangements and Leadership and Service Management. We received "Exceeding" National Quality Standards for the areas of Relationships with Children and Collaborative Partnerships with Families and Community. This is an amazing result and Evie, Lucy and Val should be congratulated on this assessment as it really is justified and echoes all the hard work that has gone into delivering an exceptional program.

The centre has invested a lot of time and resources into delivering new and innovative programs. These programs, including Lego Club, Yoga Fresh and Chess Club, have been very well received and have continued into three terms now. This, along with many new room hirers has increased our weekly participation numbers and enabled greater access to community programs. The centre continually looks at new and exciting opportunities in order to develop strong community networks and foster community involvement.

Financially, the centre returned a small surplus, a great effort, given the decreasing ability to secure grants and sponsorship and the increase in the day to day operations of the centre. This result was made even more of an achievement based on the need to increase salaries for all staff under the federal wage decision for those working within the community sector. A combination of changing opening times fine tuning all of our processors and consolidating our expense accounts has been able to achieve this. The Management Committee worked very hard to deliver a budget that would still meet our strategic vision, purpose, values and goals, but it was lean and was always going to be a challenge. We did have our challenges along the way but managed to implement innovative programs and services. A result of the hard work by all staff and the knowledge and expertise of the Management Committee to ensure that financially the centre was viable and accountable along the way.

Over the past year I have been working closely with Linkwest, our Peak Body, to introduce a Results Based Accountability to our operations. This is predominately a strategic thinking and continuous improvement process allowing us to look at what we wish to achieve, measure this and how we are travelling towards achieving our outcomes. Essentially measuring our impact. Currently

we are working on one cost centre, the School Holiday Program, but will eventually introduced this thinking centre wide.

Another significant change over the last twelve months was the decision to take over the Management of Playgroup. Playgroup is a significant community group within the centre however due to the nature of volunteer committees were struggling to fill a Committee. A decision was made to keep playgroup and for the Loftus Community Centre to manage this. The centre has worked very closely with the current Playgroup Committee and the Department of Commerce to remain constitutional across all areas. The centre officially took over in July and are currently working on a marketing plan to attract new families.

Being a non-funded centre we are as always very appreciative of the financial support that we receive from the City of Vincent. We have continued to work very closely with the City of Vincent in jointly delivering programs and services to the Community, of particular note is the Vincent bike hire which is going from strength to strength.

I would like to take this opportunity to thank our wonderful Management Committee for their continual dedication to the centre's goals and long term vision. The support I receive really does make my job stress free and enjoyable. A special mention to our President, Emily Chee, who allows me to call her whenever to run things past her and make decisions with very tight time frames, it is greatly appreciated. Lastly my job is made all the more easier with our amazing staff who really make this centre the success it is. I am very fortunate to work with a great group of people who have the ability to make the workplace fun and enjoyable. Thank you Sarah, Jenny, Evie, Lucy, Dana, Val, Robin and Helene for your commitment and expertise.

Jodi Lendrum
Centre Manager



Loftus Community Centre being the Hub of our community.

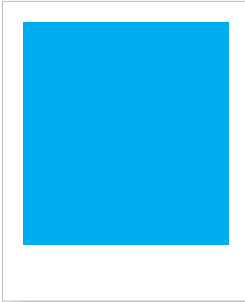
Management Committee



President
Emily Chee



Treasurer
Sharon O'Reilly

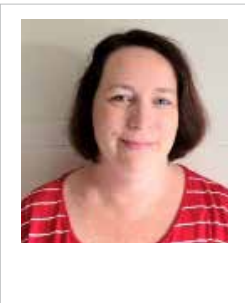


Secretary
Vacant

Staff



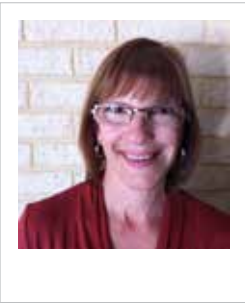
Centre Manager
Jodi Lendrum



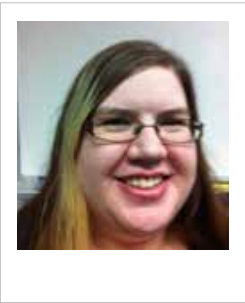
Bookkeeper
Jenny Rustean



3+ Kindy Teacher
Evie Deas



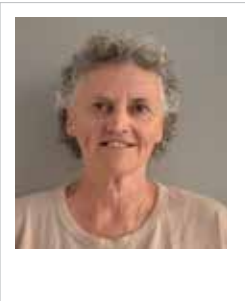
3+ Assistant
Lucy Timmings



Customer Service
Sarah Henderson

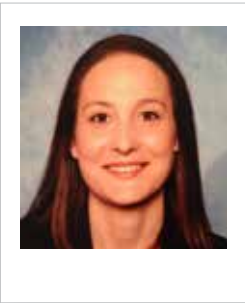


Project Co-ordinator
Dana Gaylard



3+ Kindy Volunteer
Val Pearson

Committee Members



Playgroup Rep
Katherine Athanasiou



Childcare Cooperative
Tarren Smith



Toy Library Rep
Karen Navaratnam



Platinum Rep
Jill Rice

An integral part of the centre's operations is having rooms available for both not for profit and for profit groups to hire space at the centre. This enables the centre to have a great cross section of programs and services on offer and assists us to facilitate the strategic direction of the centre.

Our group members, both regular and one off hirers, continue to remain strong and interest in room hire at the centre continues to grow. This area is exceptionally important for the centre in delivering a dynamic hub that connects people in our community. It also remains a significant area of financial importance in that it allows us to operate the centre at break even.

Volunteers

Without volunteers it would make it very difficult to deliver the large cross section of programs and services that we currently do. The centre is made up of many volunteers who continue to join together to make the centre the success that it is today and has been for many years.

I would like to extend a huge thankyou to our many volunteers from our Management Committee, Community Groups, Senior Groups, University's and our local schools who provide many year 10 and 11 students to assist with our School holiday Program. It is very much appreciated and we look forward to continuing on our great partnership that we have developed with our local community.

Room Hirers

Throughout the year the centre is also available for one-off room hire events, birthday parties, meetings, conferences, special events and training days. The centre is able to accommodate a wide range of events due to the number of rooms including a kitchen and playground. We extend a huge thankyou to our local community for your continued support in choosing Loftus Community Centre as a venue to hold your events.

Supporters and Sponsors

The Loftus Community Centre thanks and acknowledges the following supporters:

- | | |
|-----------------|---------------------------|
| City of Vincent | Grill'd Leederville |
| Lotterywest | Linkwest |
| LCC Craft Group | Bendigo Bank, North Perth |

Vincent Bike Hire

The Loftus Community Centre has worked in partnership with the City of Vincent to help deliver the innovative bike hire program. The centre has been responsible for taking the bookings and hiring the bikes on behalf of the City of Vincent.

It is a fantastic initiative which has been very well received by the local community. It has been a pleasure to work with Francois, the Travelsmart Officer from the City of Vincent. We would like to thank Francois for his patience whilst we worked through systems and issues with decreased opening hours.





Strategic Plan

Vision

A dynamic hub that connects people in our community.

Purpose

Foster community engagement to enhance quality of life by facilitating access to relevant activities and services.

Values

respectful, honest and open
community focussed and responsive
professional and accountable
collaborative, inclusive and embracing diversity



Goals

1. Our Community

To engage with our community by providing opportunities for enjoyment, contribution and learning.

Strategies

1. Identify programs and activities relevant to the needs of our Community.
2. Effectively deliver relevant and diverse programs to our Community.
3. Actively encourage volunteers and facilitate their involvement in our Community.

2. Our Centre

To operate a viable, effective and accountable community centre.

Strategies

1. Attract, train, and retain community focussed and enthusiastic staff and volunteers.
2. Continually develop accountable management systems to ensure long term stability, viability and growth.
3. Ensure that our facilities and practices support sustainability.



3. Our Partners

To actively develop partnerships, relationships and networks.

Strategies

1. Identify and develop mutually beneficial relationship models with our partners.
2. Explore opportunities for developing collaborative projects, sponsorship and funding.



4. Our Services

To effectively promote the services, programs and activities of the Centre.

Strategies

1. Identify our key target audiences.
2. Disseminate information internally, online, through our networks and via the media.



www.loftuscommunitycentre.org.au

info@loftuscommunitycentre.org.au

99 Loftus Street, Leederville, WA 6007

t: (08) 9328 3098 f: (08) 9227 7780

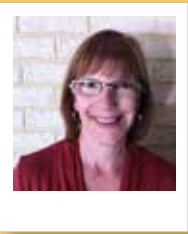


School Holiday Program

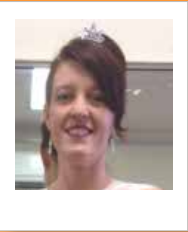
We have made some significant changes to our School Holiday Program over the last twelve months. We have refined some of our practices to fall in line with the Early Years Learning Framework as is operational within our 3+ kindy. Whilst there is a financial impact on this cost centre, the benefits are significant in terms of our delivery of an exceptional program.

Our numbers have remained steady and we are continually looking at new programs and facilitators to run our sessions. Over the next twelve months we will be looking at changes that can be made in order to continue to provide a financially successful and appealing program to our community.

Our facilitators remain the key to the success of this program and we are continually amazed and appreciative of the wonderful program that they deliver each and every school holidays. Our facilitators are both very qualified and enthusiastic in ensuring that they are innovative and inspiring for our 3 – 8 year olds.

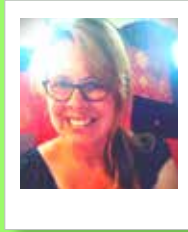


Lucy Timmings
Lucy is a mum of two grown up sons 19 and 22. Lucy has worked at Loftus Community Centre for 16 years. The last 12 years she has been the Teacher Assistant for the 3+Kindy program held at the centre. When she finds some spare time she likes to spend it in her sewing room or the kitchen being creative.



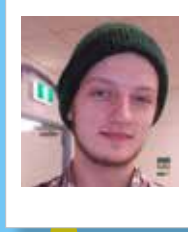
Caroline Edwards
Caroline has been teaching dance and gymnastics to youngsters for the past 21 years. In the last 7 years she has taught drama as well, and works during the school term for Helen O'Grady's Drama Academy. In her 'spare' time, Caroline also runs her own jazz and hip hop dance studio for 3—10 year olds, as well as teaching a music, movement and gymnastics program for 18 month— 4 years through daycare centres. Caroline has been a facilitator delivering school holiday programs at Loftus Community centre for the last 7 years. Caroline is also a brilliant cook and a fabulous mother to four dazzling young ladies between the ages of 8 and 15.

Always there to lend a hand and her dancing skills through volunteer work at school, after school and beyond, Caroline is indeed a woman of many talents!



Helene Offer
Helene is a mum of three rapidly maturing kids who has worked at Loftus School Holiday program since July 2013. Helene is currently studying to become an early childhood teacher, but has been involved creatively with children for many years prior to commencing her studies. She has worked with the AWESOME festival, the Perth Fringe Festival, built and

designed floats for the Pride parade, and in her spare time loves to use plastic recyclables to make unexpected crazy creations. Her alter ego, Missus Offer, works as an education assistant in a pre-primary classroom, and also volunteers at the same school helping to run a community vegetable garden. Helene also fancies herself as an urban zoo keeper, at last count she feeds 3 guinea pigs, 4 rabbits, 4 cats, a dog, 3 fish tanks and a very healthy population of motorbike frogs (as well as her three kids!).



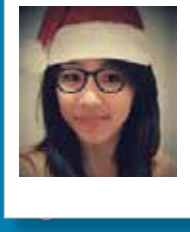
Scott Buckley-Hewitt
Scott is currently a music tutor, teaching both Clarinet and Guitar to high school students. Scott has joined the Loftus Community Centre as a facilitator for our school holiday program and our famous 'Lego Club'. Scott has a huge following with our local kids and his programs continue to build momentum from term to term. Welcome aboard Scott.



Sarah Loden
Sarah is a storyteller, writer, and community artist whose work is inspired by kids and a passion for play. She has degrees in Communications and Anthropology and worked with organization and institutions, including the San Antonio Museum of Art, Artpace, Museum of Fine Arts, Houston, the YMCA, AWESOME Arts, and The Song Room in youth and family programming for over a decade. In 2012, she started Moving Imagination, her business for creative arts education services, and teaches regularly in centres around Perth. One day, she would love to appear on Sesame Street. In the meantime, she attends lessons in tap dance, practices her singing in the shower, and makes videos of herself that she's too embarrassed to share.



Robin Cage
Robin is a Canadian gal living with her Aussie family here in sunny Perth. Robin has been designing and creating jewellery pieces for the last decade, exploring new ways to reinvent and recreate to turn everyday items into one of a kind pieces. Over the years, Robin has held jewellery workshops in schools throughout Perth. Robin is a designer, crafter, avid baker and recycler. She is the author of the blog "from the blue shed" where she shares projects and recipes created in and around the home. She enjoys growing her family's suburban farm where they grow their own vegetables and keep chickens. Robin is an education assistant and has been working with children in primary schools for the last three years.



Jeany Harmoejanto
This is a glimpse of Jeany's daily life. Dancing (esp Ballet) and art-crafting have been a part of her life for almost 25 years, and even now she still falls in love with it. In school hours, she enjoys being a "Mom" and a friend to cute-lovely-adorable primary school children, as she is currently taking a role as a relief education assistant.

When she is at home, she is enjoying life as a newly-wed, managing her online shop, working on DIY online-to-be project, exploring and executing her dreams. Her next "dream comes true" project will be the imaginative ballet class for kindy and pre-primary and learning to play piano.



3+ Kindy

Our Kindy year has been a rewarding year as the children have settled well into our class routine and began making friendships. It has been great getting to know the families and children in 2015. This year we had many changes, such as we introduced (2 full days) and 2 x 1 full day instead of half days. This was due to family needs. The families have verbally told us that they love the 2 day session and full day sessions.

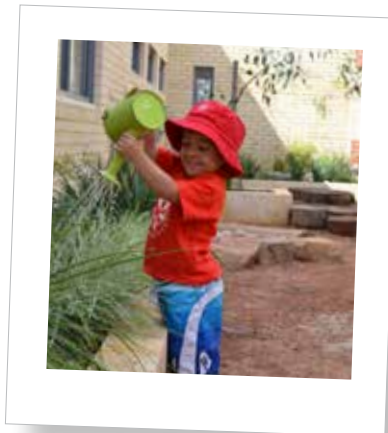
This year we have been working on the National Quality Framework and working out ways to improve our service. Our aim is to have a high quality educational program for the children. We have worked very hard on developing a new policy and procedures manual, which has given the Loftus Community Centre educators a basis for supporting learning outcomes of children in accordance with National Quality Standards. The policy document has new forms and templates that will guide our 3+ Kindy program. Throughout the year Lucy and I have been working on our Quality Improvement Plan. Some on the improvements that we included in our plan were as follows:

- A new policy and procedure manual.
- New sand for the sandpit.
- A portable first aid kit and an Asthma first aid kit.
- Child Protection Training.
- Staff Appraisals.
- Safety gate for our front door.
- Nature playground.

In July 2015, the Education and Care Regulatory Unit asked the 3+ Kindy to email our Quality Improvement Plan. This was the beginning of the Department of Local Government and Communities assessment and rating cycle. The purpose of the assessment and rating is to determine whether, or at what rating level our service met National Quality Standards and requirements of the National Regulations. Our Assessment officer Adam then visited for two days to

observe practice, ask questions and sight documentation.

The assessment and rating went very well. Adam spoke highly of the children, families and program. In August we were sent a letter stating our service was rated Meeting National Quality Standards and Exceeding National Quality Standards in our relationships with children and partnerships with families and communities. Our next assessment and rating will be in 2017. Staff at Loftus Community Centre were very pleased with the result. Efforts from management, educators, administration and families helped us achieve such a wonderful result.



Our program in 2015 has been based on the children's interests. The children this year have been enthusiastic learners and have been interested in space, dinosaurs, animals and fairytales. We have provided them with learning experiences based on the Early Years Learning Framework, their interests and partnerships with families. As part of our Philosophy we acknowledge each child's culture

background. We have had parents come into our classroom to share their culture with the class. Parents have been contributing to our program and teaching us recipes, their languages and various art and craft activities based on their culture. This has been an exciting educational experience for the children. It is important for the children to understand and interact with people across cultures. We have a large multicultural class this year and it has been wonderful for the children to learn about these cultures.

We also provide a range of child initiated learning experiences that are open ended and engaging. Our children have loved the nature play this year and have used the water pump to access water to fill their watering cans for the vegetable garden. The Kindy's have loved role play, music, art, outdoor play, excursions and incursions this year. The class really enjoyed a visit from Fairy Cara, who taught the children the importance of the environment.

Working with Lucy and Val this year has been a pleasure and I would like to thank them for all their efforts towards the 3+ Kindy program. This may be Val's last year volunteering at 3+ Kindy and we would like to thank her for her years of service. She has been an amazing help to us throughout the years.

Evie Deas
3+ Kindy Teacher



Platinum Club

Platinum Club

The centre has seen a good increase in numbers over the last twelve months which is very pleasing considering we have again not had great success in receiving grants. We are continually looking at new activities and courses for our Platinum members to compliment what is already on offer. We have introduced a chess club to our regular activities of Tai Chi, Table Tennis, Lead lighting and craft and Heart Moves, which has been a great success.

Through a continuing partnership with the City of Vincent we are always looking at new funding opportunities and activities for our members. The City of Vincent will again hold the annual Seniors Expo during Seniors Week, which we will again have the opportunity to promote the Platinum membership to our community.

It is an absolute pleasure to spend our working days with our platinum members. We look forward to spending the next twelve months with each and every one of you. A huge thank you for your weekly attendance and friendship.

Childcare Co-operation

Childcare Co-operative

Our small group of Childcare Cooperative families have again this year successfully delivered a childcare program with great success. All families involved continue to enjoy both the social benefits of being involved with this special group of parents and children, whilst at the same time being able to enjoy some time to themselves once a week.

The Loftus Childcare Cooperative are looking for new families to join for 2016 as some of the children will move into kindy programs. The program, affectionally known as Co-op, does rely on volunteers and a minimum of ten

families in order to maintain the purpose of the program. The centre would like to congratulate and thank all of the families involved as it really is a unique program that contributes significantly to the community centre.



Toy Library

Despite having many changes to the Committee over the past twelve months the Loftus Toy Library have remained resilient continuing to deliver a great service to the community. The Committee have managed to increase the member base from 40 to 60 families and are financially in a reasonable position. Fundraising, whilst a challenge, still remains key to the toy library in order to maintain the existing fee structure.

Having recently received a Lotterywest Grant, the toy library is currently very much at capacity in terms of storage and therefore able to provide an extensive range of toys to its members.

The Loftus Community Centre would like to pass on our thanks and appreciation to the toy Library Committee for continuing to provide a great community service to our community. We recognize and applaud the many hours your volunteers dedicate to ensuring that this service exists in the way it does and as a result assists in providing the centre with a comprehensive range of services.

Over the last 12 months there have been some significant changes within playgroup. Due to difficulties with Playgroup being able to maintain numbers on their Committee, Loftus Community Centre agreed to take over the Management of Playgroup. This was a lengthy process as we had to dissolve the existing constitution and ensure that Playgroup fitted within the centre’s constitution. Throughout all of this the existing playgroup members continued to receive the same high standard and quality services.

However, it was difficult to promote and expand on the current membership base whilst the handover was taking place. As a result the playgroup membership base has decreased. Loftus Community Centre will be actively promoting and marketing Playgroup as a priority over the coming year. Loftus Playgroup is an essential community group within the centre as this is a fundamental aspect of the centre’s vision, purpose and values.

The Management of the Centre would like to extend a thank you to the outgoing Playgroup Committee and recognise the efforts of these volunteers. The centre very much appreciates the extra meetings, phone calls and inconvenience that dissolving a constitution involves. We look forward to being actively involved with Playgroup over the coming months.



I am pleased to report that the Loftus Community Centre has once again experienced a solid financial year with total income and expenditure for 2014/15 \$403,117.62 and \$401,996.04 respectively, and a resulting net surplus of \$1,121.58.

The Centre continues to generate the majority of income from three key service areas – school holiday program (\$62,490.35), 3+ kindy (\$142,716.05) and room hire (\$117,050.78). Growth was again experienced in room hire income with an increase of 16% on 2013/14 figures.

Membership income remained at similar levels to 2012/13 (\$9,410.35) reflecting the important services provided by the Centre to playgroup, the toy library, platinum and other individual and business community members.

Town of Vincent funding of \$55,620 contributes significantly to the provision of programs and activities to the community equating to 13.8% of the Centres total income.

The main expenditure for the Centre continues to be employment –\$223,947.23 (55.7% of the Centre’s 2014/15 expenses (\$401,996.04). The other key expense is cleaning (\$52,025.71 – 13%) as a result of the necessary engagement of a professional cleaning company.

2014/15 continued to be a challenging year financially for the Centre. I would like to take this opportunity to commend manager Jodi Lendrum for her responsible management of the Centre budget and the efforts of the Centre committee, staff and volunteers.

Sharon O'Reilly
Treasurer

Profit & Loss

| | This Year 2014-2015 \$ | This Year 2013-2014 \$ |
|--|------------------------------|------------------------------|
| Income | | |
| Classes | \$10,135.33 | \$6,283.11 |
| Coffee Machine Earnings | \$00.00 | \$54.00 |
| City of Vincent Contribution | \$55,620.00 | \$54,000.00 |
| Lotterywest | \$0.00 | \$17,518.22 |
| Fundraising | \$246.09 | \$773.18 |
| Special Events | \$181.50 | \$459.02 |
| Charity Donations | \$00.00 | \$30.00 |
| Sponsorship | \$0.00 | \$272.73 |
| Grants | \$0.00 | \$0.00 |
| Hire Charges | \$117,050.78 | \$100,651.86 |
| Holiday Program | \$62,490.35 | \$63,726.86 |
| Interest received | \$1,803.39 | \$1,849.60 |
| Membership Income | \$9,410.35 | \$9,905.84 |
| Miscellaneous | \$0.00 | \$0.00 |
| Three + Income | \$146,179.53 | \$132,299.97 |
| Total Income | \$403,117.62 | \$387,824.39 |
| Expenses | | |
| Audit/Bookkeeping | \$21,302.60 | \$20,207.41 |
| Advertising/Marketing | \$2,879.01 | \$2,714.03 |
| Bad Debt Write Off | \$0.00 | \$226.00 |
| Bank Charges | \$1,644.87 | \$1,678.81 |
| City of Vincent (Lease, Rates, Water, Capital Reserve) | \$14,409.07 | \$13,750.01 |
| Class Expenses | \$8,663.72 | \$4756.15 |
| Cleaning | \$52,025.71 | \$45,357.57 |
| Cleaning Consumables | \$1,622.02 | \$2,580.11 |
| Computer Expense | \$0.00 | \$654.54 |
| Coffee Machine | \$0.00 | \$177.27 |
| Charity Donations | \$0.00 | \$126.00 |
| Charity Fundraising Costs | \$0.00 | \$68.75 |
| Electricity | \$9,958.09 | \$9,715.51 |
| Employment Expenses | \$223,947.23 | \$203,849.56 |
| Fundraising Expenses | \$20.45 | \$282.64 |
| Furniture & Equipment | \$0.00 | \$35.45 |
| Grant Acquittal | \$0.00 | \$0.00 |
| Lotterywest | \$0.00 | \$17,640.30 |
| Housekeeping | \$1,279.90 | \$1,235.14 |
| Internet Expense | \$403.21 | \$260.00 |
| IT Support | \$615.73 | \$1,400.00 |
| Class Manager costs | \$6,053.15 | \$4,736.15 |
| Insurance | \$6,270.32 | \$5,143.99 |
| Management committee | \$1,612.15 | \$1,104.72 |
| Membership/Subscriptions | \$1,646.12 | \$2,103.91 |
| Office Supplies | \$612.03 | \$840.54 |
| Postage | \$73.64 | \$0.00 |
| Photocopier | \$4,885.99 | \$4,311.76 |
| Program/Projects | \$0.00 | \$0.00 |
| Playground Redevelopment | -\$90.91 | \$0.00 |
| Repairs/Maintenance | \$1,322.88 | \$1,615.64 |
| Room Hire Expenses | \$0.00 | \$0.00 |
| School Holiday Program | \$29,680.31 | \$28,936.75 |
| Security Monitoring | \$0.00 | \$255.00 |
| Special Events | \$0.00 | \$1,048.01 |
| Telephone | \$3,341.75 | \$2,085.19 |
| Three Plus Expenses | \$7,073.44 | \$6937.98 |
| Other Expenses | \$0.00 | \$5.64 |
| Volunteer Expenses | \$0.00 | \$71.41 |
| Total Expenses | \$401,996.04 | \$386,112.39 |
| Operating Profit | \$1,121.58 | \$1,712.00 |
| Net Surplus / (Deficit) | \$1,121.58 | \$1,712.00 |

Balance Sheet

| | This Year 2014-2015 \$ | Last Year 2013-2014 \$ |
|------------------------------|------------------------------|------------------------------|
| Assets | | |
| Current Assets | | |
| Cash On Hand | | |
| Bendigo Cheque Account | \$35,146.63 | \$41,675.19 |
| Bendigo Cash Account | \$43,664.07 | \$31,889.34 |
| Bendigo Bond Account | \$17,050.00 | \$14,830.00 |
| Visa Debit Card | \$941.62 | \$297.73 |
| Petty Cash | \$0.00 | \$0.00 |
| Float | \$100.00 | \$100.00 |
| Undeposited Funds | \$1501.20 | \$210.00 |
| Total Cash On Hand | \$98,403.52 | \$89,002.26 |
| Debtors | -\$322.50 | \$1,229.00 |
| Total Current Assets | \$98,081.02 | \$90,231.26 |
| Total Assets | \$98,081.02 | \$90,231.26 |
| Liabilities | | |
| Trade Creditors | \$0.00 | \$0.00 |
| GST Liabilities | | |
| GST Collected | \$9439.93 | \$10,913.25 |
| GST Paid | -\$3,773.71 | \$4,134.71 |
| Total GST Liabilities | \$5,666.22 | \$6,778.54 |
| Payroll Liabilities | | |
| PAYG Liability | \$9,026.00 | \$8,272.00 |
| Superannuation Liability | \$5,542.06 | \$5,257.96 |
| Annual Leave Accrual | 0 | 0 |
| Long Service leave | \$17,761.10 | \$13,338.42 |
| Total Payroll Liabilities | \$32,329.16 | \$26,868.38 |
| Bonds for Hire | \$16,600.00 | \$14,230.00 |
| Relief Staff | \$1,641.02 | \$1,531.30 |
| Professional Development | \$700.00 | \$0.00 |
| Playground Redevelopment | \$133.00 | \$1,133.00 |
| Advertising and Marketing | \$3,000.00 | \$3,000.00 |
| Suspense Account | | |
| Total Liabilities | \$60,269.40 | \$53,541.22 |
| Net Assets | \$37,811.62 | \$36,690.04 |
| Equity | | |
| Retained Earnings | \$36,690.04 | \$34,978.04 |
| Current Year Surplus/Deficit | \$1,121.58 | \$1,712.00 |
| Total Equity | \$37,811.62 | \$36,690.04 |

* Full copies of the Loftus Community Centre's audited accounts are available on request.