

loftus community centre



annual report
2016



hello

Contents

President's Report	2 - 3	Childcare Co-op	15
Centre Manager's Report	4 - 5	Toy Library	16
Our Centre	6 - 7	Loftus Playgroup	16
Strategic Plan	8 - 9	City of Vincent	17
School Holiday Program	10 - 11	Treasurer's Report	18
3+ Kindy	12 - 13	Profit & Loss	19
Platinum Club	14	Balance Sheet	19



Emily Chee
President

I have greatly enjoyed my time on the Management Committee, as the Playgroup Representative and then as the President from October 2013. It has given me great pleasure being the President of the Loftus Community Centre over the past three years.

I had my first experience of the centre in 2011 when my daughter was a couple of months old and our mothers group started attending playgroup at the centre. Since then my eldest daughter attended the wonderful kindy program and my youngest is now loving her year at kindy.

I have greatly enjoyed my time on the Management Committee, as the Playgroup Representative and then as the President from October 2013. The Centre is fortunate to be managed by Jodi Lendrum and supported by a team of dedicated staff, with a special mention to Jenny Rustean, and the Centre's members and volunteers. It has been an absolute pleasure

working with Jodi who's professionalism and hard working attitude is always accompanied with a positive perspective and she's a real asset to the centre.

I would like to acknowledge the fabulous kindy at the centre. Evie Deas and Lucy Timmings have developed an engaging and supportive program for the children. Their imagination and creativity is wonderful and I have enjoyed watching both my daughters grow through the program.

It is disappointing to report that the Centre had a \$9,829.96 deficit this financial year. The Centre worked tirelessly to manage and reduce expenditure during the year. As the financial

statements reflect the centre operates very lean. In saying this the Centre is still a vibrant hub of the community.

The Centre the past year has faced a number of challenges which have made operating a not-for-profit community centre difficult. The downturn in the economy which has affected the centre over the years, has had a greater impact in the last 12 months as members within the local community appear to have less disposable income. This has affected the Centre's school holiday program, playgroup and to some extent the initial uptake of kindy enrolments. These three programs in the past have been utilised by families who are traditionally not working full-time and therefore do not need to claim a childcare rebate, they have been luxuries.

One of the biggest shifts over the last 12 months has been the Centre's relationship with the City of Vincent. It has been a positive relationship with the City of Vincent being the Centre's largest single financial supporter. This year the City of Vincent

has seen a turnover of their staff and they are developing a greater accountability and transparency to their rate payers. Consequently the lease, including maintenance and other additional costs, and the funding process has undergone an overhaul. These changes have greatly affected the centre both financially and in the time in negotiating and understanding the changes that are occurring.

The positive outcome of these changes is the City of Vincent are working collaboratively with Management Committee to build stronger local community links and the continued financial viability of the centre.

Finally, I would like to thank my fellow Management Committee, the Centre's staff, volunteers members and the City of Vincent for your ongoing support in keeping the Loftus Community Centre an essential part of the local community.

Emily Chee President - Loftus Community Centre

enjoyed





Jodi Ledrum
Centre Manager

The previous twelve months have flown by and it is difficult to comprehend that another full year has come to an end. I have now completed five years as Centre Manager of this **fabulous community centre** but happily still enjoying the diversity and excitement that comes with managing this **dynamic facility**.

What is evident, is that the challenges of managing an unfunded, not-for-profit centre in the current economic environment has intensified. This has resulted in both the Staff and Management Committee looking at all areas of the centre and making some necessary changes in order to progress the centre and maintain our current unfunded status. What is clear is that in the five years that I have been here, the last year has seen the most amount of change and will result in some significant shifts for the centre. We are progressing down this pathway, and whilst it is challenging it is also exciting.

The Loftus Community Centre currently leases the facilities from the City of Vincent on a 10-year lease with a five year plus five-year option to renew. We are currently in the late stages of this lease and have started discussions with the City of Vincent. Over the past twelve months this has dominated our time as there has been significant variations to how the lease was previously managed and how it will be managed moving forward. As a result, we have invested a large amount of time in looking at the current lease and possible changes for any future leases. This combined with changes to the subsidy the

centre receives from the City of Vincent has occupied our time significantly. The City of Vincent invited public submissions for the City's annual budget in line with the 2016/2017 Council Priorities. In the past the centre would automatically receive the subsidy as a component of our budget for the upcoming year. The centre was now required to apply for this subsidy and indicate how the subsidy would be spent. An initiative that was fully supported by the Management Committee and Staff. The Loftus Community Centre was successful in receiving the subsidy as per previous years and resulted in both the Management Committee and City of Vincent discussing a positive and progressive partnership that has the potential to be innovative and market leading within the Community Centre and Local Government Sectors. Discussions have started in regards to how this partnership will look but it is fair to say that both parties see it as a very positive move, and personally I look forward to working with the City of Vincent in pulling this together.

Another major area that we have been working on over the past year has been the Governance of our centre. The Associations Act has now been passed and adopted so we are required to update our Constitution in line with this. This requires significant changes for our centre, but again it is all very positive and will allow the centre to have strong and positive Governance. We have started the groundwork with this in relation to attending training courses in regards to necessary changes that we need to make to our constitution. This will result in us re-writing our Constitution, Policies and Procedures, developing a Business Plan, new Strategic Direction and Marketing Plan. This, combined with our new Partnership model with the City of Vincent means exciting times are ahead for the Centre and I look forward to guiding the centre during these significant changes.

Given the challenging environment we find ourselves in, it is made all the easier by our members, who regularly attend our many programs on offer. I

look forward to seeing each and every one of you on a weekly basis and I can honestly say that I have developed some great friendships over the years that I have worked here. I look forward to continuing this friendship into the next year.

I would like to take this opportunity to thank our wonderful Management Committee for their continued support of the Centre's initiatives and to myself as Centre Manager. The voluntary hours that you dedicate to our centre are both impressive and appreciated. A special mention to our wonderful President, Emily Chee for her advice and patience during what has been a very challenging year.

Emily will be stepping down as President at our AGM but we are fortunate to have retained Emily in some capacity on our Management Committee. Thank you Emily, your dedication to the centre has been awesome. Lastly, but certainly not least, the continued success of this centre is the result of some very driven and dedicated staff members, Jenny, Evie, Lucy, Sarah, Helene and Val, and our facilitators, Helene, Lucy, Robin, Caroline, Scott, Jeannie, Sarah, and Matilda, a very big thank you for all your hard work and continued commitment to the centre. You make my job very easy.

Jodi Lendrum Centre Manager



community

our centre

An integral part of the centre's operations is having rooms available for not for profit and for profit groups to hire space at the centre. This enables the centre to have a great cross section of programs and services on offer and assists us to facilitate the strategic direction of the centre.

Our group members, both regular and one off hirers, continue to remain strong and interest in room hire at the centre continues to grow. This area is exceptionally important for the centre in delivering a dynamic hub that connects people in our community. It also remains a significant area of financial importance in that it allows us to operate the centre at break even.

Over the past 12 months we have continued to see a steady increase in both our regular and one off room hirers. Room hire continues to remain an essential component of our community centre as it builds on our diversity in regards to programs on offer and is also a major income generator for the centre, integral for a not-for-profit run community centre.

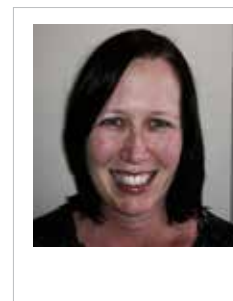
Our room hire portfolio currently reaches an enormous cross section of the community offering programs and services to children, adults, seniors, families, local businesses and our not-for-profit community services. The centre has made a conscious decision to embrace our local community in choosing to hire our facility to run

their programs as it promotes us in a positive light and ensures that we are offering programs and services needed by the local community. We maintain affordable fees and charges for both our not-for-profit and for-profit rates ensuring that we are providing opportunities for enjoyment, contribution and learning.

Volunteers

Without volunteers it would make it very difficult to deliver the large cross section of programs and services that we currently do. The centre is made up of many volunteers who continue to join together to make the centre the success that it is today and has been for many years.

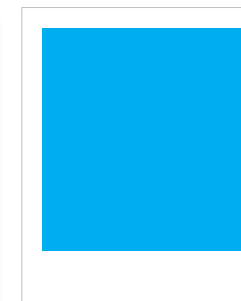
I would like to extend a huge thankyou to our many volunteers from our Management Committee, Community Groups, Senior Groups, University's and our local schools who provide many year 10 and 11 students to assist with our School holiday Program. It is very much appreciated and we look forward to continuing on our great partnership that we have developed with our local community.



President
Emily Chee

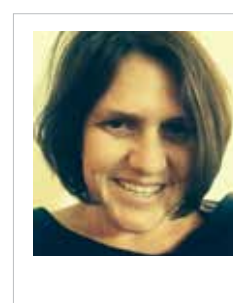


Treasurer
Sharon O'Reilly

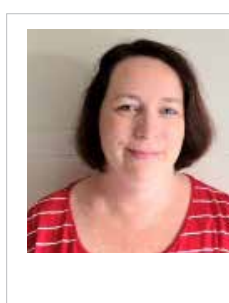


Secretary
Vacant

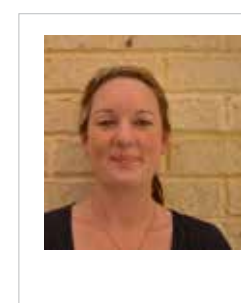
Management



Centre Manager
Jodi Lendrum

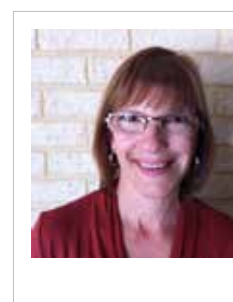


Bookkeeper
Jenny Rustean

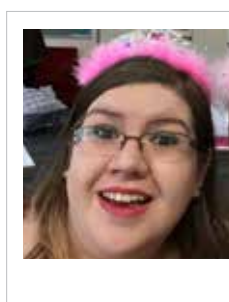


3+ Kindy Teacher
Evie Deas

Staff



3+ Assistant
Lucy Timmings



Customer Service
Sarah Henderson



3+ Kindy Volunteer
Val Pearson

Committee Members



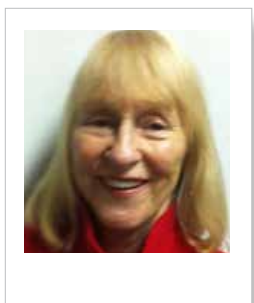
General Member
Kunal Malhotra



Childcare Cooperative
Nhi Huynh



Toy Library Rep
Fiona Reading



Platinum Rep
Jill Rice



Strategic Plan

Vision

A dynamic hub that connects people in our community.

Purpose

Foster community engagement to enhance quality of life by facilitating access to relevant activities and services.

Values

respectful, honest and open
community focussed and responsive
professional and accountable
collaborative, inclusive and embracing diversity



Goals



1. Our Community

To engage with our community by providing opportunities for enjoyment, contribution and learning.

Strategies

1. Identify programs and activities relevant to the needs of our Community.
2. Effectively deliver relevant and diverse programs to our Community.
3. Actively encourage volunteers and facilitate their involvement in our Community.

2. Our Centre

To operate a viable, effective and accountable community centre.

Strategies

1. Attract, train, and retain community focussed and enthusiastic staff and volunteers.
2. Continually develop accountable management systems to ensure long term stability, viability and growth.
3. Ensure that our facilities and practices support sustainability.



3. Our Partners

To actively develop partnerships, relationships and networks.

Strategies

1. Identify and develop mutually beneficial relationship models with our partners.
2. Explore opportunities for developing collaborative projects, sponsorship and funding.



4. Our Services

To effectively promote the services, programs and activities of the Centre.

Strategies

1. Identify our key target audiences.
2. Disseminate information internally, online, through our networks and via the media.



www.loftuscommunitycentre.org.au

info@loftuscommunitycentre.org.au

99 Loftus Street, Leederville, WA 6007

t: (08) 9328 3098 f: (08) 9227 7780

Popular



The Centre's **School Holiday Program** continues to remain a **very popular** and well attended program. Whilst we are not seeing the numbers that we had been seeing a few years ago, the program **remains strong** and a **much needed service** to our local community. Over the year we have continued to make changes to meet the changing demands and fluctuations in numbers. We have also employed Helene to plan and implement the program, **and the result has been great.**

Helene, together with the facilitators manage to continually provide an exceptional program for our 3 – 8 year olds. We continually are refining and streamlining our procedures to meet the Early Years Learning Framework, in regards to service delivery, enrolments, safety and security and program development. Our facilitators remain the key to the success of this program and we are continually amazed and appreciative of the wonderful program that they deliver every school holidays.





Lucy Timmings

Lucy is a mum of two grown up sons 19 and 22. Lucy has worked at Loftus Community Centre for 16 years. The last 12 years she has been the Teacher Assistant for the 3+Kindy program held at the centre. When she finds some spare time she likes to spend it in her sewing room or the kitchen being creative.



Helene Offer

Helene is a mum of three rapidly maturing kids who has worked at Loftus School Holiday program since July 2013. Helene is currently studying to become an early childhood teacher, but has been involved creatively with children for many years prior to commencing her studies. She has worked with the AWESOME festival, the Perth Fringe Festival, built and designed floats for the Pride parade, and in her spare time loves to use plastic recyclables to make unexpected crazy creations. Her alter ego, Missus Offer, works as an education assistant in a pre-primary classroom, and also volunteers at the same school helping to run a community vegetable garden. Helene also fancies herself as an urban zoo keeper, at last count she feeds 3 guinea pigs, 4 rabbits, 4 cats, a dog, 3 fish tanks and a very healthy population of motorbike frogs (as well as her three kids!).



Sarah Loden

Sarah is a storyteller, writer, and community artist whose work is inspired by kids and a passion for play. She has degrees in Communications and Anthropology and worked with organization and institutions, including the San Antonio Museum of Art, Artpace, Museum of Fine Arts, Houston, the YMCA, AWESOME Arts, and The Song Room in youth and family programming for over a decade. In 2012, she started Moving Imagination, her business for creative arts education services, and teaches regularly in centres around Perth. One day, she would love to appear on Sesame Street. In the meantime, she attends lessons in tap dance, practices her singing in the shower, and makes videos of herself that she's too embarrassed to share.



Robin Cage

Robin is a Canadian gal living with her Aussie family here in sunny Perth. Robin has been designing and creating jewellery pieces for the last decade, exploring new ways to reinvent and recreate to turn everyday items into one of a kind pieces. Over the years, Robin has held jewellery workshops in schools throughout Perth. Robin is a designer, crafter, avid baker and recycler. She is the author of the blog "from the blue shed" where she shares projects and recipes created in and around the home. She enjoys growing her family's suburban farm where they grow their own vegetables and keep chickens. Robin is an education assistant and has been working with children in primary schools for the last three years.



Matilda Lee

Matilda joined our School Holiday Program this year as an assistant to our facilitators. Matilda is a crowd favourite with the kids that attend our program and she has a natural and friendly rapport with both the kids and other staff. Matilda is currently a Nanny for three local families and we are very lucky to have secured her for our program. Welcome aboard Matilda.



Scott Buckley-Hewitt

Scott is currently a music tutor, teaching both Clarinet and Guitar to high school students. Scott has joined the Loftus Community Centre as a facilitator for our school holiday program and our famous 'Lego Club'. Scott has a huge following with our local kids and his programs continue to build momentum from term to term. Welcome aboard Scott.



Jeany Harmoejanto

This is a glimpse of Jeany's daily life. Dancing (esp Ballet) and art-crafting have been a part of her life for almost 25 years, and even now she still falls in love with it. In school hours, she enjoys being a "Mom" and a friend to cute-lovely-adorable primary school children, as she is currently taking a role as a relief education assistant.

When she is at home, she is enjoying life as a newly-wed, managing her online shop, working on DIY online-to-be project, exploring and executing her dreams. Her next "dream comes true" project will be the imaginative ballet class for kindy and pre-primary and learning to play piano.





Evie Deas
3+ Kindy Teacher

Our wonderful 3+ kindy kids have settled well into the class routine and as a result it has been a very rewarding year. Lucy, Val and I have loved getting to know the kids and their families and feel that same sadness in saying goodbye to the kids that we have spent so much time with, as they prepare for transition into the school kindy.

This past year we have had many of our children come for more than one day as a result of community need. Due to this, and the differences in our local school kindy days, from 2017 we have opened the enrolment system up to be more flexible. Families now have the option of enrolling one, two, three or four days to accommodate the varying kindy days offered at the local schools. This year we have been working on the National Quality Framework and working out ways to

improve our service. Our aim is to have a high quality educational program for the children. Last year our Kindy was issued a new policy and procedure manual, which has given the Loftus Community Centre educators a basis for supporting learning outcomes of children in accordance with National Quality Standards. The policy document had new forms and templates that we have used this year. The new forms and templates have been great for our

programming such as learning stories, summative assessments and developmental checklists. Throughout the year Lucy and I have been working on our Quality Improvement Plan. Some of the improvements that we included in our plan were as follows:

- Researching Apps for a way of communicating to parents online about their child's learning.
- Fundraising ideas for new resources – we would love an interactive whiteboard for the classroom.
- Looking into charity's our Kindy families could help out. Christmas hamper donations, Ruah, Red Cross etc.
- Safety gate for our front door.
- Nature playground.

Our program in 2016 has been based on the children's interests. The children this year have been enthusiastic learners and have been interested in space, dinosaurs, and fairytales. We have provided them with learning experiences based on the Early Years Learning Framework, their interests and partnerships with families. As part of our Philosophy we acknowledge each child's culture background. We have had parents come into our classroom to share their culture with the class. Parents have been contributing to our program and teaching us recipes, their languages and various art and craft activities based on their culture. This has been an exciting educational experience for the children. It is important for the children to understand and interact with people across cultures. We have a large multicultural class

this year and it has been wonderful for the children to learn

about these cultures.

We also provide a range of child initiated learning experiences that are open ended and engaging. Our children have loved the nature play this year and have used the water pump to access water to fill their watering cans for the vegetable garden. The Kindy's have loved role play, music, art, outdoor play, excursions and incursions this year.

The Kindy's were very lucky to have Miss Helene volunteer her time to work on a recycled lid art project. The class collected lids from their homes and then glued them onto a wooden boat template. This fabulous artwork is now on display in the outdoor area near the sandpit.

The class really enjoyed a visit from Alec the music man. Alec makes his own musical instruments and brings them into the classroom. The class had free play and structured play activities. The children had fun making as much noise as they liked and explored different musical instruments. Our Kindy's also had a fun sports day at the Loftus Recreation Centre. Boris the gym instructor taught the children fun games such as tunnel ball, dodge ball, relays and tag. This was a great excursion and a wonderful way to connect to the outside community.

Working with Lucy and Val this year has been a pleasure and I would like to thank them for all their efforts towards the 3+ Kindy program.

Evie Deas 3+ Kindy Teacher

rewarding



community groups

Platinum Club

Over the past twelve months we have **seen a big increase** in our weekly participation numbers within our regular platinum courses. With a **stronger connection** to the Community Development team at the City of Vincent and a **wider promotion of our programs** we have been able to achieve this.

Whilst our regular programs remain strong and provide an amazing social and learning opportunity for our Seniors, we are continually looking at other programs and events to hold for our Platinum members.

Over the next twelve months we will be looking at developing a stronger strategic direction in line with re-writing our Constitution. A priority area within this will be our Platinum membership and

how we can achieve set objectives to make every visit to the centre enjoyable and engaging.

The staff extend a huge thankyou to all of our Platinum members for their continued support of the centre and our programs. We have developed so many friendships with this group and we look forward to your weekly visits. Your patronage and stories are very much appreciated.



Childcare Co-operative



This year the Childcare Cooperative **welcomed a number of new families** that joined our small group of families. It has been **wonderful for all families** involved in getting to know the **new children** and their parent.

We have experienced positive benefits in providing our children with opportunities to play and engage with other children in a supportive, nurturing and safe environment whilst enabling parents the opportunity to have time away from their caring role once a week.

In 2017, we will be looking for new families to join our group as it is expected that a few children will move into Kindy programs. Our group operate

solely from the parents' voluntary time and does need a minimum 9 families to remain operational. We would like to thank all the families involved for their contribution this year which has enabled us to run this unique program within the community centre.

groups

The Leederville
Toy Library remains a

resilient and fantastic service to the local community. The membership numbers have remained very strong, fluctuating between 65 – 70 families throughout the year.

This is a very healthy membership base given that the maximum numbers of families the toy library can support is 80.

Over the past year the Toy Library was very fortunate to have received a grant of \$3500 from the City of Vincent. This grant enabled us to replenish and add to the current toy base as well as purchasing the ongoing consumables needed to sustain the Toy Library. The Committee would like to send our sincere appreciation to the City of Vincent for this much needed funding. To compliment this, the Toy Library were also successful in raising a further \$700 in fundraising to assist with our Saturday morning roster.

The Toy Library can only be successful due to the many hours the Committee volunteers to ensure that this quality service remains available to our local community. Congratulations to the entire Committee on another successful year, your dedication and many hours that you donate are very much appreciated. Also, we would like to extend a huge thankyou to all of our members who assist with toy cleaning and stocktakes when needed, and continue to support the service by borrowing the toys on a regular basis. Lastly we would like to extend our appreciation to the Loftus Community Centre for your continued support and promotion of the Leederville Toy Library.

The Centre has always taken the view that Playgroup is an essential community group.

A necessary service to offer to our members. However, over the last eighteen months we have seen some major changes and Playgroup is currently in the phase of rebuilding. Loftus Community Centre took over the Management of the Playgroup over a year ago and have struggled to build it to the numbers that it once was. A combination of natural progression to the school years from our regular members and the dramatic fall of playgroup participation numbers in general,

from Mum's and Dad returning to work earlier due to the current economic environment have added to this. However, over the last two months we have seen an increase in enquires and now have a number of playgroups successfully running in the allotted time slots. We are hopeful that we can continue to build on this and once again have a thriving playgroup community at the Loftus Community Centre



CITY OF VINCENT

The Loftus Community Centre and the City of Vincent have always worked very well together in providing programs and services to the local community. However, over the last twelve months the two parties have embarked down a path of significant change and innovation to look at new ways to work together in a more cohesive and innovative nature.

Whilst this is in the early stages of discussion the future for the Loftus Community Centre is very exciting. Over the next twelve months we will work very closely with the City of Vincent to discuss a different approach to how both parties deliver community programs.

During this process, we will also be reviewing the Centres business plan, strategic direction and operating model. To assist in this process, we have a direct contact with City of Vincent and have the ability to both cross promote and openly discuss future programs that we both deliver.

The Staff and Management Committee are very excited about our future partnership with the City of Vincent and know that we are working in the right direction for the future success of the centre.

to
go
e
t
r
e

City of Vincent



Sharon O'Reilly
Treasurer

The resulting financial position of a loss close to \$10,000 reflects the challenging financial circumstances that the Loftus Community Centre committee and staff have continued to balance for a number of years now.

The Centre generated similar income to 2014/15 with the majority of our income generated through our core programmes: 3+ kindy (\$147,537), room hire (\$109,026) and the school holiday program (\$56,878).

High membership levels (income of \$8,923) continues to reflect the important services and programmes provided through this Centre for the benefit of community members and groups such as toy library, playgroup, platinum and including professional education and wellness programs, for example.

Town of Vincent funding of \$56,499 makes a vital

and significant contribution to the provision of our community programs and activities equating to 14% of the Centres total income.

The main expenditure challenge for the Centre continues to be employment, in 2015/16 55% of total expenditure. This is despite harsh decisions having to be made at the beginning and throughout the financial year for staff hours to be kept to minimum levels.

I would like to take this opportunity to commend manager Jodi Lendrum for her responsible management of the Centre budget and the efforts of the Centre committee and staff.



Profit & Loss

	Last Year 2014 - 2015	This Year 2015-2016
Income		
Classes	\$10,135.33	\$10,982.58
City of Vincent Contribution	\$55,620.00	\$56,449.00
Lotterywest	\$0.00	
Fundraising	\$246.09	\$2,038.91
Special Events	\$181.50	\$272.70
Charity Donations	\$00.00	
Sponsorship	\$0.00	
Grants	\$0.00	
Hire Charges	\$117,050.78	\$109,025.87
Holiday Program	\$62,490.35	\$56,877.67
Interest received	\$1,803.39	\$1,705.58
Membership Income	\$9,410.35	\$8923.75
Miscellaneous	\$0.00	\$9.96
Three + Income	\$146,179.53	\$147,537.80
Total Income	\$403,117.62	\$399,855.74
Expenses		
Audit/Bookkeeping	\$21,302.60	\$21,051.44
Advertising/Marketing	\$2,879.01	\$2,920.00
Bank Charges	\$1,644.87	\$1,644.46
City of Vincent (Lease, Rates, Water, Capital Reserve)	\$14,409.07	\$12,407.16
Class Expenses	\$8,663.72	\$9,452.00
Cleaning	\$52,025.71	\$52,568.01
Cleaning Consumables	\$1,622.02	\$1,736.59
Computer Expense	\$0.00	\$629.70
Electricity	\$9,958.09	\$11,023.84
Employment Expenses	\$223,947.23	\$224,480.94
Fundraising Expenses	\$20.45	\$1,394.60
Housekeeping	\$1,279.90	\$1,268.03
Internet Expense	\$403.21	\$0.00
IT Support	\$615.73	\$2,370.73
Class Manager costs	\$6,053.15	\$6,712.90
Insurance	\$6,270.32	\$6,246.26
Management committee	\$1,612.15	\$1,088.10
Membership/Subscriptions	\$1,646.12	\$3,400.06
Office Supplies	\$612.03	\$886.94
Postage	\$73.64	\$127.27
Photocopier	\$4,885.99	\$3,558.31
Repairs/Maintenance	\$1,322.88	\$411.29
School Holiday Program	\$29,680.31	\$33,586.32
Security Monitoring	\$0.00	\$151.39
Telephone	\$3,341.75	\$2,727.80
Three Plus Expenses	\$7,073.44	\$5,654.41
Other Expenses	\$0.00	\$874.81
Volunteer Expenses	\$0.00	\$0.00
Total Expenses	\$401,996.04	\$409,685.70
Operating Profit	\$1,121.58	\$9,829.96
Net Surplus / (Deficit)	\$1,121.58	\$9,829.96



Balance Sheet

	This Year 2015-2016	Last Year 2014-2015
Assets		
Current Assets		
Cash On Hand		
Bendigo Cheque Account	\$32,185.69	\$35,146.63
Bendigo Cash Account	\$40,352.94	\$43,664.07
Bendigo Bond Account	\$18,400.00	\$17,050.00
Visa Debit Card	\$473.88	\$941.62
Float	\$100.00	\$100.00
Undeposited Funds	\$367.00	\$1501.20
Total Cash On Hand	\$91,879.51	\$98,403.52
Debtors	-\$10.00	-\$322.50
Total Current Assets	\$91,869.51	\$98,081.02
Total Assets	\$91,869.51	\$98,081.02
Liabilities		
Trade Creditors	\$0.00	\$0.00
GST Liabilities		
GST Collected	\$9,732.48	\$9439.93
GST Paid	-\$3,580.06	-\$3,773.71
Total GST Liabilities	\$6,152.42	\$5,666.22
Payroll Liabilities		
PAYG Liability	\$9,542.00	\$9,026.00
Superannuation Liability	\$4,581.54	\$5,542.06
Long Service leave	\$20,412.87	\$17,761.10
Total Payroll Liabilities	\$34,536.41	\$32,329.16
Bonds for Hire	\$18,400.00	\$16,600.00
Relief Staff	\$966.02	\$1,641.02
Professional Development	\$700.00	\$700.00
Playground Redevelopment	\$133.00	\$133.00
Advertising and Marketing	\$3,000.00	\$3,000.00
Total Liabilities	\$63,887.85	\$60,269.40
Net Assets	\$27,981.66	\$37,811.62
Equity		
Retained Earnings	\$37,811.62	\$36,690.04
Current Year Surplus/Deficit	-\$9,829.96	\$1,121.58
Total Equity	\$27,981.66	\$37,811.62



99 Loftus Street, Leederville, WA 6007
info@loftuscommunitycentre.org.au www.loftuscommunitycentre.org.au
 t: (08) 9328 3098 f: (08) 9227 7780